

# *Ultrasonic Humidification System*

Instruction Book – CLI-AH201



  
CLI-MATE™  
improve your environment

by  
**Breville**



## Contents

- 2 Cli-Mate Recommends  
Safety First
- 6 Components
- 8 Functions
- 9 Care & Cleaning
- 10 Troubleshooting

## CLI-MATE RECOMMENDS SAFETY FIRST

At Cli-Mate we are very safety conscious. We design and manufacture consumer products with the safety of you, our valued customer, foremost in mind. In addition we ask that you exercise a degree of care when using any electrical appliance and adhere to the following precautions.

## IMPORTANT SAFEGUARDS

### READ ALL INSTRUCTIONS BEFORE USE AND SAVE FOR FUTURE REFERENCE

- All components need to be installed in accordance with the user manual instructions for correct performance of unit.
- This appliance should be used in conjunction with a safety switch.
- This appliance is not intended for use by persons (including children) with reduced physical, sensory or mental capabilities, or lack of experience and knowledge, unless they have been given supervision or instruction concerning use of the appliance by a person responsible for their safety.

- Do not operate any appliance with a damaged cord or plug or after the appliance malfunctions, or has been damaged in any manner.
- If the supply cord is damaged, it must be replaced by the manufacturer, its service agent or similarly qualified persons in order to avoid a hazard.
- Children should be supervised to ensure that they do not play with the appliance.
- Do not use appliance for other than intended use.
- Do not disassemble, repair or re-form the unit, it may cause injury, fire or other malfunctions. A qualified service agent must make all service adjustments. Unauthorised disassembling of the product will void the warranty.
- Unplug from outlet when not in use and before cleaning. Never plug in or unplug unit with wet hands.
- Do not use unit outdoors or expose to greasy or damp environments.
- Keep the rear air inlet and outlet free from air blocking materials such as clothing, plastic bags or papers. Air flow is required for the unit to operate effectively.
- Place unit on a flat location at least 30cm from wall or other appliances.
- When the unit is in operation, keep all body parts, jewellery, hair and loose clothing away from the openings
- Unit must be placed on a stable flat surface to reduce possible excessive vibration and noise.

- Keep the unit away from fire, flammable gas, combustible products or vapours, and corrosive substances.
- Do not operate the unit without filters.
- When transporting the air purifier, always hold the handles on the side of the unit.
- To protect against fire, electric shock and personal injury, do not immerse cord, plugs, or appliance in water or other liquid.
- Do not place on or near a hot gas, electric burner or heating appliance.
- Check voltage to be sure that the voltage indicated on the nameplate agrees with your voltage.

## IMPORTANT SAFEGUARDS FOR ALL ELECTRICAL APPLIANCES

- Unwind the power cord fully before use.
- Do not let the power cord hang over the edge of a bench or table, touch hot surfaces, or become knotted.
- To protect against electric shock do not immerse power cord, power plug or appliance in water or any other substance.
- This appliance is not intended for use by persons (including children) with reduced physical, sensory or mental capabilities, or lack of experience or knowledge, unless they have been given supervision or instruction concerning use of the appliance by a person responsible for their safety.

- Children should be supervised to ensure they do not play with the appliance.
- It is recommended to regularly inspect the appliance. Do not use the appliance if power cord, power plug or appliance becomes damaged in anyway. Return the entire appliance to the nearest authorised Cli-Mate Service Centre for examination and/or repair.
- Any maintenance other than cleaning should be performed at an authorised Breville Service Centre.
- This appliance is recommended for household use only. Do not use this appliance for anything other than its intended use. Do not use in moving vehicles or boats. Do not use outdoors. Misuse may cause injury.
- The installation of a residual current device (safety switch) is recommended to provide additional safety protection when using electrical appliances. It is advisable that a safety switch with a rated residual operating current not exceeding 30mA be installed in the electrical circuit supplying the appliance. See your electrician for professional advice.



#### WARNING

Fully unwind the cord before use.

## FOR HOUSEHOLD USE ONLY SAVE THESE INSTRUCTIONS



## Components

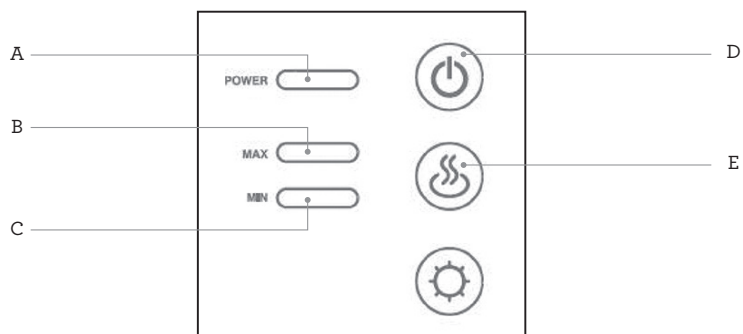


A. Mist Outlet  
B. Leather Tag

C. Lid  
D. Control Panel



## Components



### CONTROL PANEL

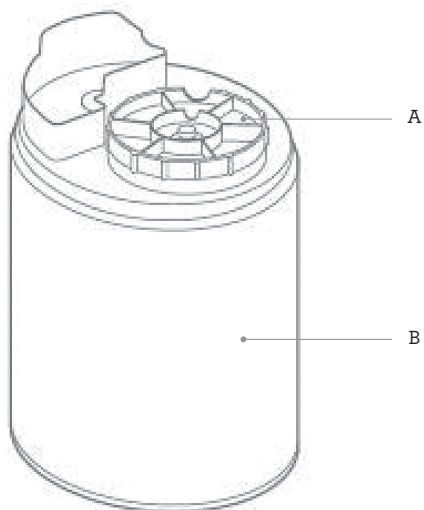
- A. Power Indicator Light
- B. Maximum Mist Output Level
- C. Minimum Mist Output Level

- D. Power Button
- E. Mist Output Level Button
- F. Light Button

### WATER TANK

- A. Water Tank Cover
- B. Water Tank


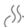

Note: Water tank shown upside down.





## Functions

### OPERATION INSTRUCTIONS

1. Remove the lid by lifting the leather tag.
  2. Take out the water tank.
  3. Turn the water tank upside down and unscrew the water tank cover (turn it anti-clockwise) and fill water tank with clean water.
  6. Switch on the unit by pressing the POWER button . The Power indicator light will illuminate blue and the unit will begin to work on default setting (MIN mist level).
  7. To select MIST LEVEL: Press the Mist level button  to select between MAX (maximum) and MIN (minimum).
  8. When water level in the water tank is low, the unit will automatically stop operation and power indicator light will flash red. Follow steps 1-4 to continue.
  9. Light Option: Push the Light Button  to switch on/off the light located underneath the unit.
4. Replace the water tank cover. Turn the water tank back up the right way and place into the unit. Place the lid back on.
  5. Locate a flat, stable location and plug the power cord into the appropriate electrical outlet. The Power indicator light will illuminate red.



### NOTE

Use only clean, cool tap water to fill the water tank. Do not use hot water. Filtered or distilled water is recommended to avoid scale build up if tap water is too hard.

### PRODUCT SPECIFICATIONS

PRODUCT SPECIFICATIONS	ULTRASONIC HUMIDIFICATION SYSTEM
MODEL CODE	CLI-AH201
POWER SUPPLY	20W
POWER CONSUMPTION	2.5 Litres
WATER TANK CAPACITY	150ml/h
EVAPORATION RATE	Up to 20m <sup>2</sup>
NOISE LEVEL	10 Hours





## Care & Cleaning

**CAUTION:** Before carrying out cleaning or maintenance of the product, always turn off and unplug the cord from the power socket.

- Do not rinse the unit or immerse the unit in water.
- Do not use detergent to clean any water-containing parts of the humidifier.
- Do not use abrasive cleaners or brushes to clean.
- Clean the surface of the device with a soft cloth.

### SCALE

To reduce the possibility of scale (white mineral deposits) build-up on the surface of the water basins, inner surface of the water tank and transducer, the following is recommended:

- Change the water daily.
- If possible, use distilled or demineralised water.
- Drain, clean and thoroughly dry all parts of the unit before putting it into storage.

### STORAGE

If you do not plan to use the unit for an extended period of time empty water tank and base completely. Do not store with water inside base or water tank. Allow all components to dry completely before storing. Store in a cool dry location.

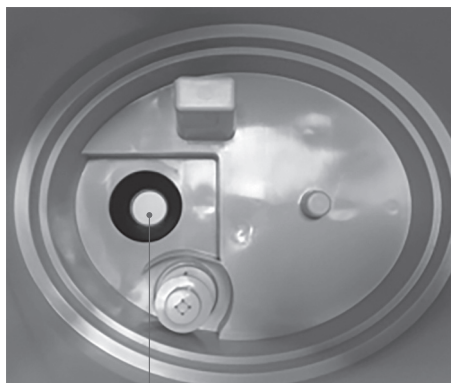
### CLEANING THE TRANSDUCER

If mineral deposits are evident on or around the transducer clean the surface with a soft, clean cloth and a small amount of undiluted white vinegar. To remove mineral deposits, put 5-10 drops of undiluted white vinegar on the surface of the transducer. Leave to soak for 2-5 minutes. Use a cotton swab to gently loosen up the scale of the surface. Rinse the transducer with clean water and wipe clean.



### IMPORTANT

Be careful not to damage the Transducer during cleaning. Do not use any metal to scrape it or touch with bare fingers.



Transducer



## Troubleshooting

PROBLEM	POSSIBLE CAUSES	EASY SOLUTION
No Power.	<ul style="list-style-type: none"><li>Unit is not plugged into wall socket.</li></ul>	<ul style="list-style-type: none"><li>Check connection to wall socket.</li></ul>
Little or no mist is produced.	<ul style="list-style-type: none"><li>Insufficient water in water tank.</li></ul>	<ul style="list-style-type: none"><li>Fill water tank.</li></ul>
	<ul style="list-style-type: none"><li>Scale build up on transducer.</li></ul>	<ul style="list-style-type: none"><li>Clean scale build up as per instructions.</li></ul>
	<ul style="list-style-type: none"><li>Water is too dirty or kept for too long in the tank.</li></ul>	<ul style="list-style-type: none"><li>Clean water tank and refill with fresh clean water.</li></ul>
	<ul style="list-style-type: none"><li>The mist may not be clearly visible depending on the balance between the room temperature and humidity.</li></ul>	
Abnormal noise.	<ul style="list-style-type: none"><li>Very low water levels in water tank.</li></ul>	<ul style="list-style-type: none"><li>Refill water tank.</li></ul>
	<ul style="list-style-type: none"><li>Unit is on an uneven surface.</li></ul>	<ul style="list-style-type: none"><li>Reposition the unit to a stable flat surface.</li></ul>
White dust accumulation.	<ul style="list-style-type: none"><li>Hard water used.</li></ul>	<ul style="list-style-type: none"><li>Follow instructions on page 9.</li></ul>



Notes

## Breville Customer Service Centre

### **Australian Customers**

**Phone:** 1300 139 798

**Web:** [www.breville.com.au](http://www.breville.com.au)

### **New Zealand Customers**

**Phone:** 0800 273 845

**Web:** [www.breville.co.nz](http://www.breville.co.nz)

# Breville®

Breville is a registered trademark of Breville Pty. Ltd. A.B.N. 98 000 092 928.  
Copyright Breville Pty. Ltd. 2018.

Due to continued product improvement, the products illustrated/photographed  
in this brochure may vary slightly from the actual product.

CLI-AH201 ANZ – A18